

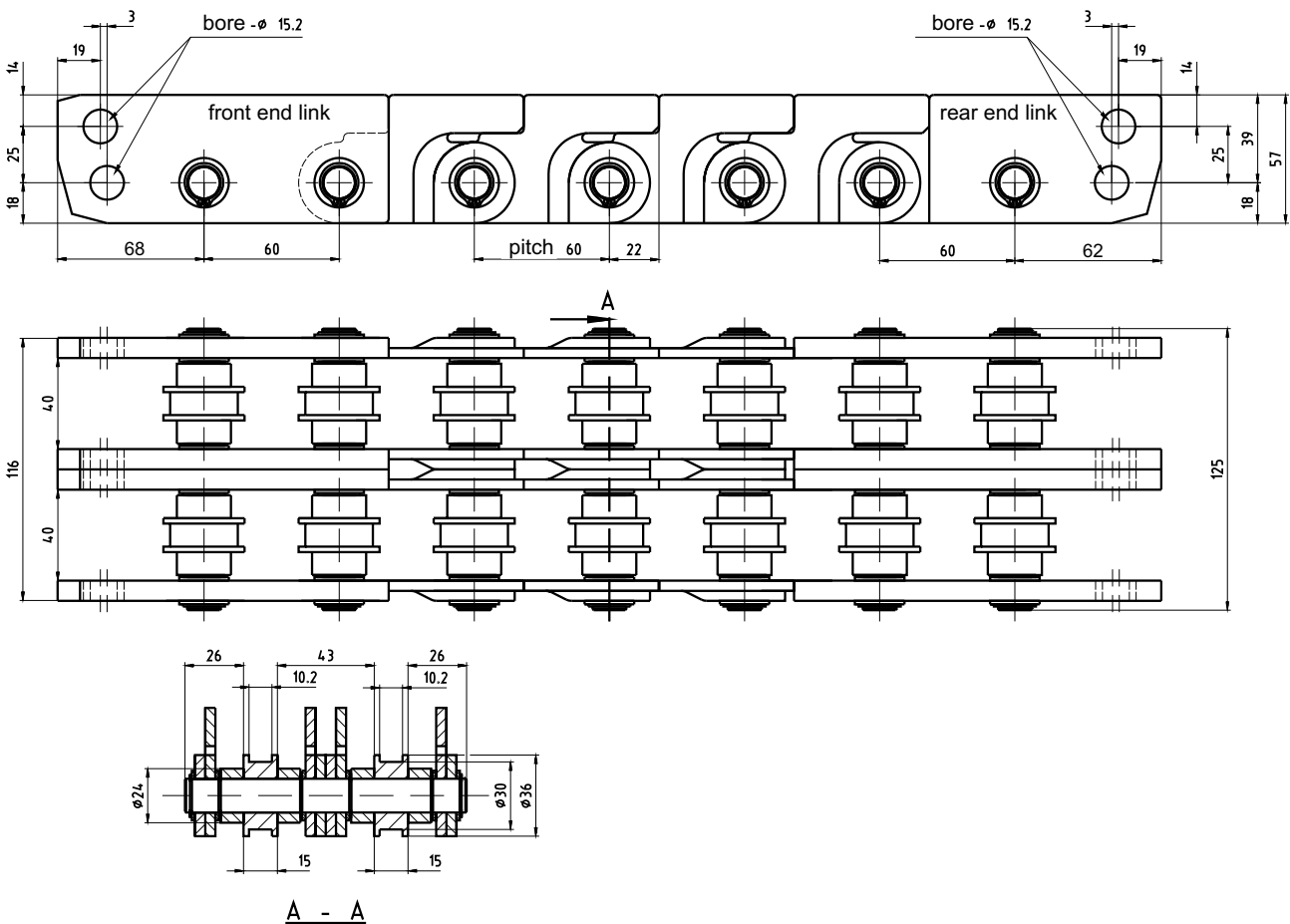
Push chain 0604

4.4 Type 60 PD

4.4.1 Technical data

- max. push force (for 1 meter of chain unguided, load guided):.....35.000 N
- weight per meter: 15 kg
- number of links per meter: 17

4.4.2 Dimensions



D5-234e/10.04

Subject to technical changes

Framo - Morat KG (GmbH & Co.)
Framo - Antriebstechnik

Po.-box 10 • D-79869 Eisenbach / Hochschwarzwald
Höchst 7 • D-79871 Eisenbach / Hochschwarzwald
Homepage: <http://www.framo-morat.com>

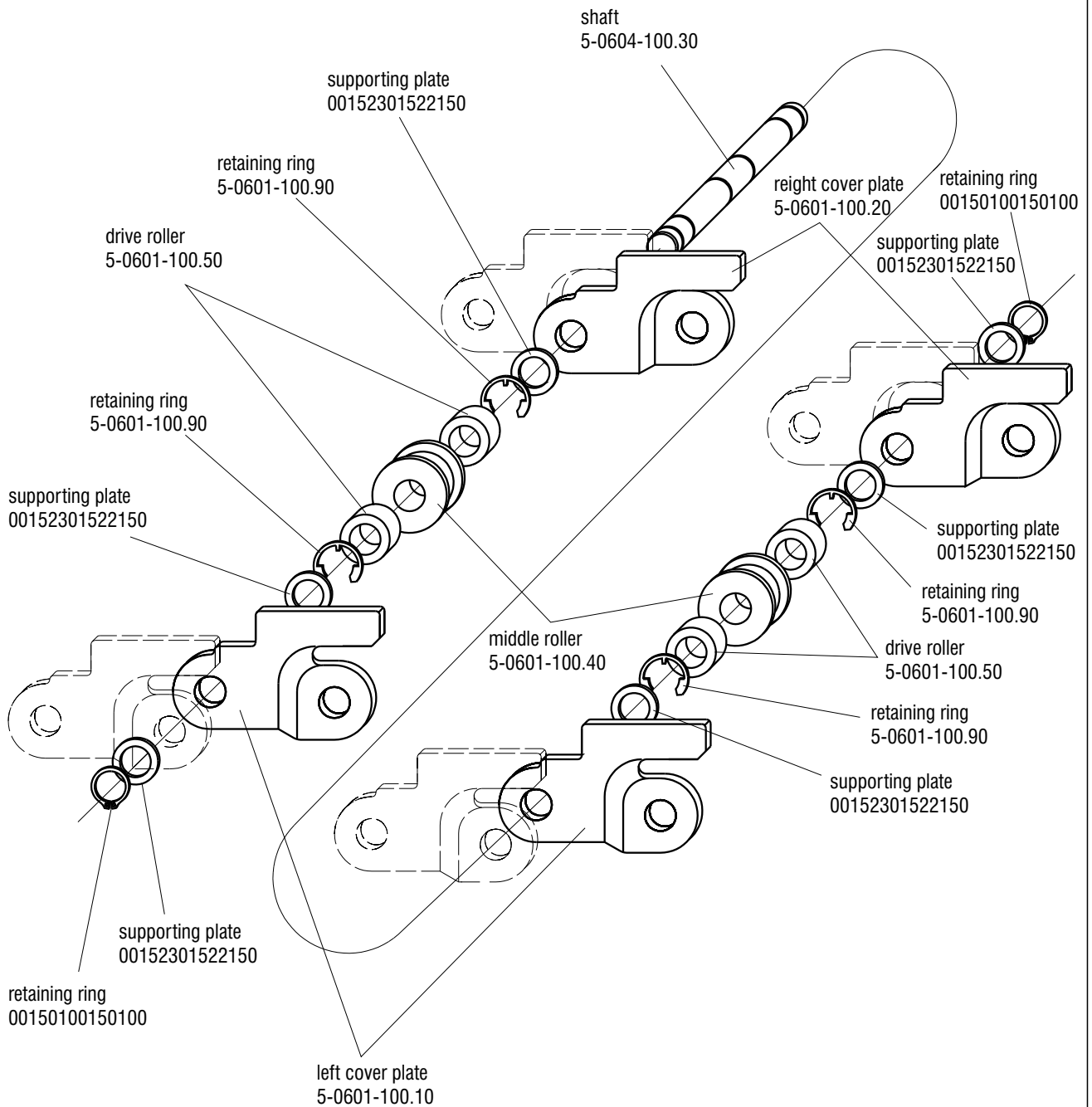
Tel. (07657) 88-0 • Fax (07657) 88-333

E-Mail: info@framo-morat.com

Push chain 0604

Type 60 PD

4.4.3 Assembly of the standard chain link 5-0604-100.00



D5-235e/10.04

Subject to technical changes

Framo - Morat KG (GmbH & Co.)
Framo -Antriebstechnik

Po.-box 10 • D-79869 Eisenbach / Hochschwarzwald
Höchst 7 • D-79871 Eisenbach / Hochschwarzwald
Homepage: <http://www.framo-morat.com>

Tel. (07657) 88-0 • Fax (07657) 88-333

E-Mail: info@framo-morat.com